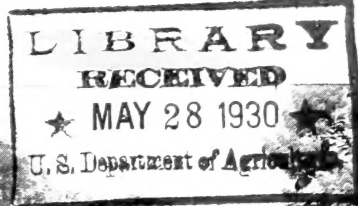


Historic, archived document

Do not assume content reflects current scientific knowledge, policies, or practices.



62,71



Suppl.

New!

Lovelier LILACS for 1930

— You *Must* Have This One! —

MY FAVORITE. The most popular lilac in the Klager display gardens. Very double, early, sure to bloom when young; the globular florets opening dark and rich, then changing to silver and smoky lavender. Fine own-root plants, \$3.00.

COOLEY'S *Iris and Lilac* GARDENS

SILVERTON, OREGON

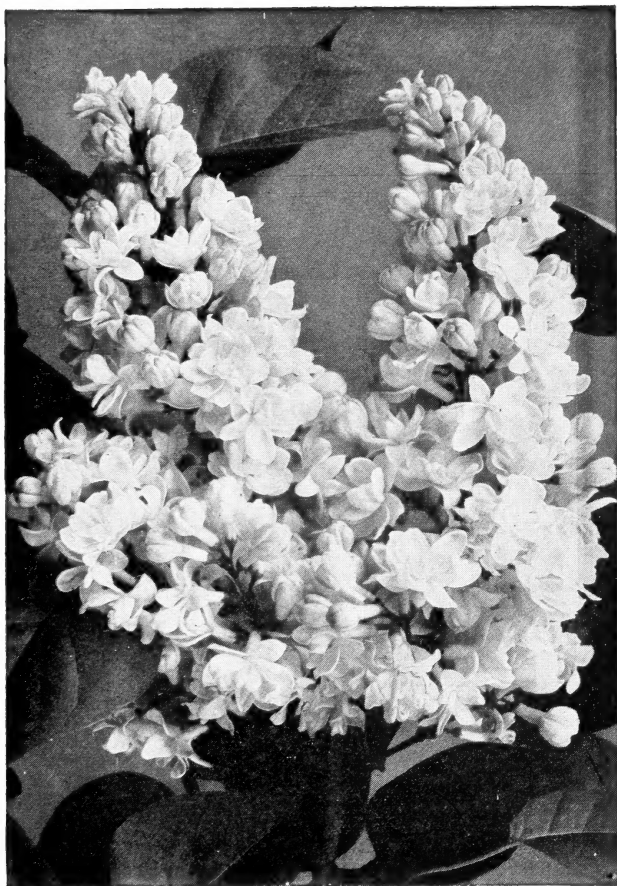
Please Note:

This list cancels all previous prices. We issue this list as a 1930 supplement to "Lovelier Lilacs," our illustrated lilac catalogue in which is given detailed description of the Klager sorts, and cultural notes and other data pertaining to lilacs. If you do not now have this booklet, we will send it gratis for the asking.

Terms: Cash with the order. Deposit of 25% will hold stock until time for shipment, which will be about November 1 to 15.

We prepay express anywhere in the U. S. on all orders of \$12.00 and over. On smaller orders the buyer must assume this expense. Many persons hesitate to place an order from such a distance as New England or the mid-West. The past season we have shipped to Maine, Georgia, New Jersey, New York, Connecticut, Michigan, Illinois, Ohio, Missouri, Virginia, Alabama, Oklahoma, Texas, Ontario, Pennsylvania, Wisconsin, New Hampshire, California, and many other diverse points. Read what these customers have to say, on the back of this leaflet. One or two bushes will travel across the continent for about \$1.00, and three to six for \$2.00 to \$2.50, and our system of packing brings them to you fresh and without damage.

Lilac Culture, by J. C. Wister, a splendid book of 123 pages, well illustrated and just published this year, tells everything you wish to know about lilacs; history, cultivation, propagation, modern varieties, species, uses, diseases, etc. I will send you a copy postpaid for \$1.35, FREE With all orders of \$15.00 or over. Illustrations on pages 1 and 3 are used through the courtesy of the Orange-Judd Publishing Company, New York, and are taken from this book.



A Fine Double Variety

FOR YOUR GARDENS—
THE NEWEST, RAREST AND BEST OF THE RECENT

French Hybrid Lilacs

After two years' study we have come to the conclusion that the French and other foreign lilacs here offered constitute the cream of lilac loveliness. New nurserymen in this country list such a select number of recent introductions. Together with the new and extremely rare Klager sorts, some of which are offered for sale for the first time, this leaflet gives the garden lover an unusual opportunity to secure some of the most entrancing of flowering shrubs at a reasonable outlay.

List of Varieties

CAPITAINE BALTET. Huge panicles of very large single flowers of a warm shade of purple lilac. This is a very recent form, and one of the masterpieces of M. Lemoine. **Each \$3.50**

JAN VAN TOL. A Holland production, the largest of all white lilacs, with florets over an inch in diameter. Single flowers, with trusses ten inches in length. **Each \$3.50**

KATHERINE HAVEMEYER. Named by M. Lemoine for the wife of America's foremost lilac fancier. Heavy, compact panicles, enormous flowers, the color cobalt lilac flushed with mauve. Semi-double to double. New and rare. **Each \$3.50**

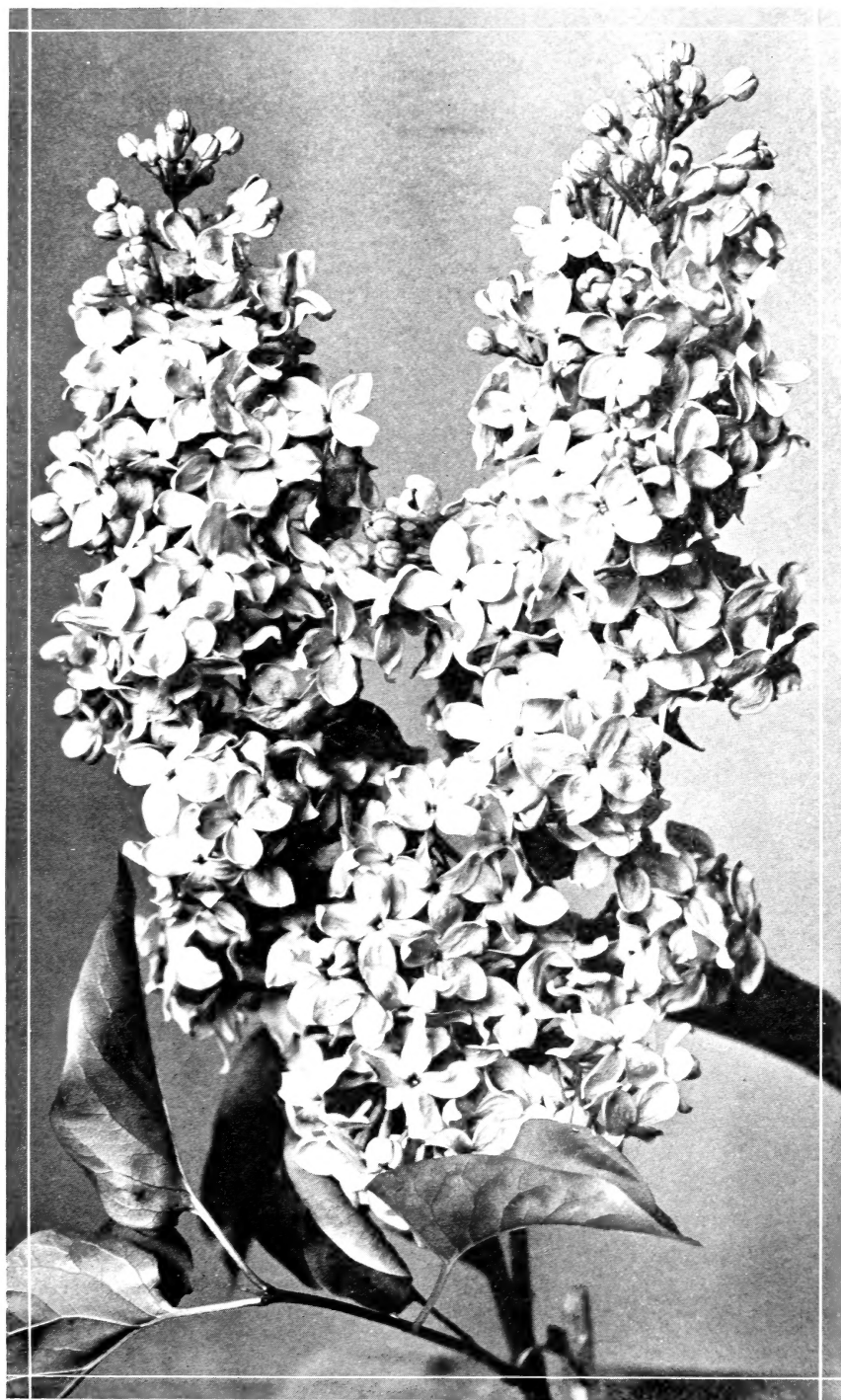
MAURICE BARRES. One of the handsomest of all single lilacs. Very floriferous, with widely branched open clusters. The color is pale azure blue when open, with minute orange eye. **Each \$3.00**

MME. F. MOREL. Approaching magenta in general color tone, this is perhaps the largest cluster produced by any lilac. Foot long trusses are not uncommon on a mature specimen. Individual florets are very large, and it blooms so freely, even on small plants, that the foliage is almost hidden. Wonderful for cutting and a show in the garden. Single blooms. **2-ft. plants, each \$3.00**

MONT BLANC. The finest single white to come from France. Considered by Lemoine as his best production, and highly recommended by Mr. Wister and Mrs. McKelvey in her lilac monograph. **Large bushes, each \$3.00**

LUTICE. Something entirely novel to the average gardener, Lutice is a hybrid form which blooms on the new wood, long after the other lilacs have faded and gone. It leafs out late, and develops flower spikes on the tender new growth, delicate flesh in color. The flowers are tubular in shape, and prolong the lilac season considerably. Vigorous in growth. My stock is large, and all own-rooted. **Each \$3.00**

LEON GAMBETTA. Recognized by all lilac collectors as indispensable, and surely one of the very best. Large, double and symmetrical. Pale in tone, of a pink effect. Early flowering and vigorous grower. **Each \$3.00**



Wm. K. Mills

List of Varieties— [Continued]

LUDWIG SPAETH. Dark purple, very rich in the bud especially. Free blooming and very dependable. This is still unsurpassed as the standard dark flowered single lilac. **Each \$2.50**

CHRISTOPHE COLOMBE. Of a blue tone when expanded. Single saucer shaped florets, produced in great profusion. The clusters are well filled, large and symmetrical. Mrs. McKelvey remarks that this is one of the most pleasing and distinct of all varieties. **Stocky bushes, well branched, \$2.50**

EDITH CAVELL. Very large creamy white, with deep cream and sulphur buds. Different from other white varieties because of its rich cream effect. Slow grower, but blooms when very small. **Each \$2.50**

PRESIDENT FALLIERES. Double lavender-pink. Trusses are simply enormous, with very double large florets. A magnificent lilac which should be in every collection. **Each \$2.50**

MARECHAL LANNES. A very handsome double with broad clusters. Buds quite tawny in appearance, developing into a beautiful shade of pinkish blue. Large and showy. **Each \$2.50**

VAUBAN. An extremely early flowering form, coming into bloom ten days ahead of the regular lilac season. Flowers are double or semi-double, pale mauve pink when open, and possess a delicious fragrance. Young plants are a mass of huge panicles. Fast growing, and should be pruned quite severely to prevent legginess and induce larger flower trusses. **Each \$2.50**

One each of the above fourteen superb varieties, the total value of which is \$40.50, will be sent PREPAID, together with a copy of LILAC CULTURE, to any address in the United States for \$36.00. This will give you a complete color range, a wide variance of types, and an unusually long season of bloom. All plants will be the regular grade choice stock, certain to give you pleasure and enjoyment for years if you give them half a chance.

Four 1930 Klager Introductions

We offer for this first time the following novelties. They are the latest developments in the hybridizing work of Hulda Klager, and are probably the finest lilacs every produced in America. Only a very few of each available.

Wm. K. Mills (illustrated on page 5). Solidly built spikes of self-colored lilac, with an overtone of ashy rose. The trusses are unusually long, with tremendously large reflexed lobes. This is the "last word" in single lilacs. **Small plants, budded stock, \$8.00**

Miriam Cooley. Shown in our last year's list. An effect of red buds and pink flowers, very lively in appearance. Foot long trusses, often compound, and in great profusion. It is light and airy, suggesting a pink plume. Vigorous, with large, healthy foliage. **Small budded stock, \$8.00**

City of Longview. Closely set florets, saucer shaped, showing at the same time many unopened fat buds. Compared with Wm. K. Mills it is rosier in tone, with concave instead of convex petals, and the trusses are wider and stockier. Both the individual florets and the compound panicles are extremely large. **\$8.00**

Woodland. A very dark red-purple, with florets over an inch in diameter. Mrs. Klager has a number of these dark varieties, many of them extra fine, but Woodland is supreme among them. We will illustrate this in color next year. Get it now and have it growing in your garden then. Very limited stock. **\$8.00**

Former Klager Introductions

Only very small own-root plants this year.

Alice, Abundant Bloomer, Clara, Hulda, R. W. Mills, Ostrander,
all \$3.00 each.

These are accurately described in our booklet, "Lovelier Lilacs." If you have mislaid your copy, ask for another.

Mrs. Morgan. This novelty is almost unobtainable this season. Very few own-root plants. **Each \$10.00**

This semi-double orchid-colored lilac will be illustrated in natural color next season.

Testimonials

Pleased customers from here and there have written to us as follows:

"The lilae arrived March 1 in good condition. It has a wonderful root system."

JAMES McSPARRAN,
Jusup, Iowa.

"The lilae came in A-1 shape. You would not know they had been shipped; roots not dry. They were beautifully packed, and the express charge was but 92 cents. The roots were wonderful!—better than any I have ever seen."

MRS. FRED CRESWELL,
Wonderland Springs,
Atlanta, Ga.

"The lilae arrived yesterday. They were in good condition, and the buds look nice and green, though the moss was pretty well dried out. Thanks for the extra plant."

L. G. CASTORF,
97 Charles St.,
Waterloo, Ont.

(The above shipment had to be inspected and fumigated before delivery.)

"The lilae came today. The packing was good and the shrub is in good condition. It has fine roots and is good size."

REV. GEO. W. BORDEN,
2812 W. 16th St.,
Oklahoma City, Okla.

"Lilae arrived in fine shape and were very fine plants. Next fall I shall want about 10 additional."

MRS. H. C. SCRUTTON,
15 Brown Court,
Petaluma, Calif.

"The first shipment of four came through in three days, express \$1.36. The second lot (seven plants) were received in four days; express \$2.47. Your method of packing is O.K. There was not a scratch on any of the plants."

ANDREW MUEHLIG,
311 South Main St.,
Ann Arbor, Mich.

"The lilae reached us in good shape and I appreciate your kindness in sending us all the varieties you did."

T. A. HAVEMEYER,
Glen Head, L. I.
New York.

I have received the lilae in very fine condition. They were wonderfully packed and came through in four days."

MRS. IDA PATTISON,
Quality Gardens,
Freeport, Ill.

"The collection of Klager Lilies was received in good condition and I am well pleased with the quality of the several specimens."

DR. E. A. MERRITT,
Chevy Chase, Md.